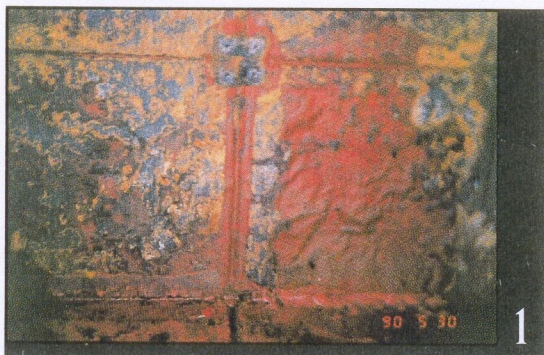


# AGRU H.D.P.E. LINER...

## Meets your Tank Lining Needs in MANY BIG WAYS!

Untreated Surface

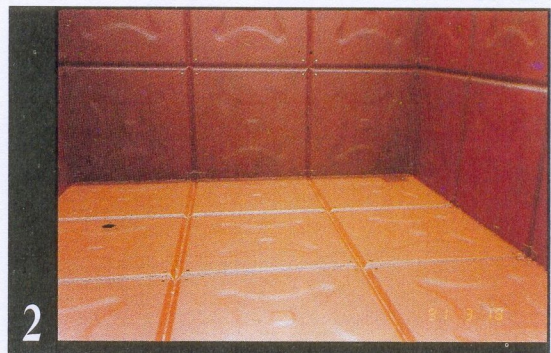


1

### COMPLETE SYSTEMS CAPABILITY

AGRU tank lining systems provide complete systems capability – from assistance in application design and engineering to installation by our field-trained teams.

Treated Surface



2

### WITH BIG ADVANTAGES

#### THICK AND RUGGED:

Three to six times the thickness of membrane liners, AGRU sheet is resistant to costly punctures and tears, yet is amazingly flexible.

#### STRONG EXTRUSION WELDED JOINTS:

Totally homogeneous joints which are even stronger than the sheet itself eliminate uncertainty of bonds made with glues, solvents, or adhesives.

1.5 mm

2 mm

2.5 mm

### EXCELLENT FOR LINING WATER TANKS

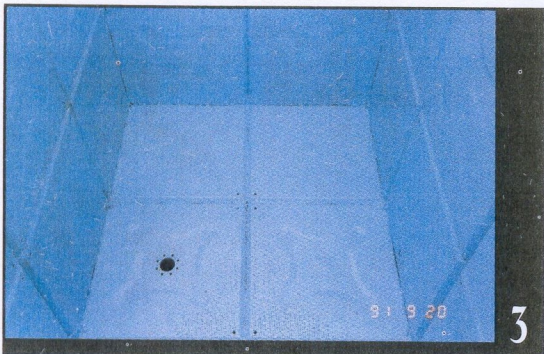
AGRU sheet has passed stringent SISIR testing and is approved by the Public Utilities Board to be completely safe for lining potable water tanks. Copies of test certificates available on request. AGRU sheet has been successfully used to line potable water tanks for public and private buildings/apartments in Singapore as well as for private and commercial sector projects.

### LARGE SHEET SIZE:

It minimizes the number of seams required, giving you a much more secure installation.

### EXCEPTIONAL RESISTANCE

Made of high density polyethylene (H.D.P.E.) AGRU sheet resists wide swings in pH, and prevents damage from rodents, termites, ultraviolet radiation, fungus and mould.



3

Coated Surface



4

AGRU H.D.P.E. Lined Surface